



CLASSIC 302i integrated amplifier

CLASSIC 302i: The Evolution of High-Quality Audio



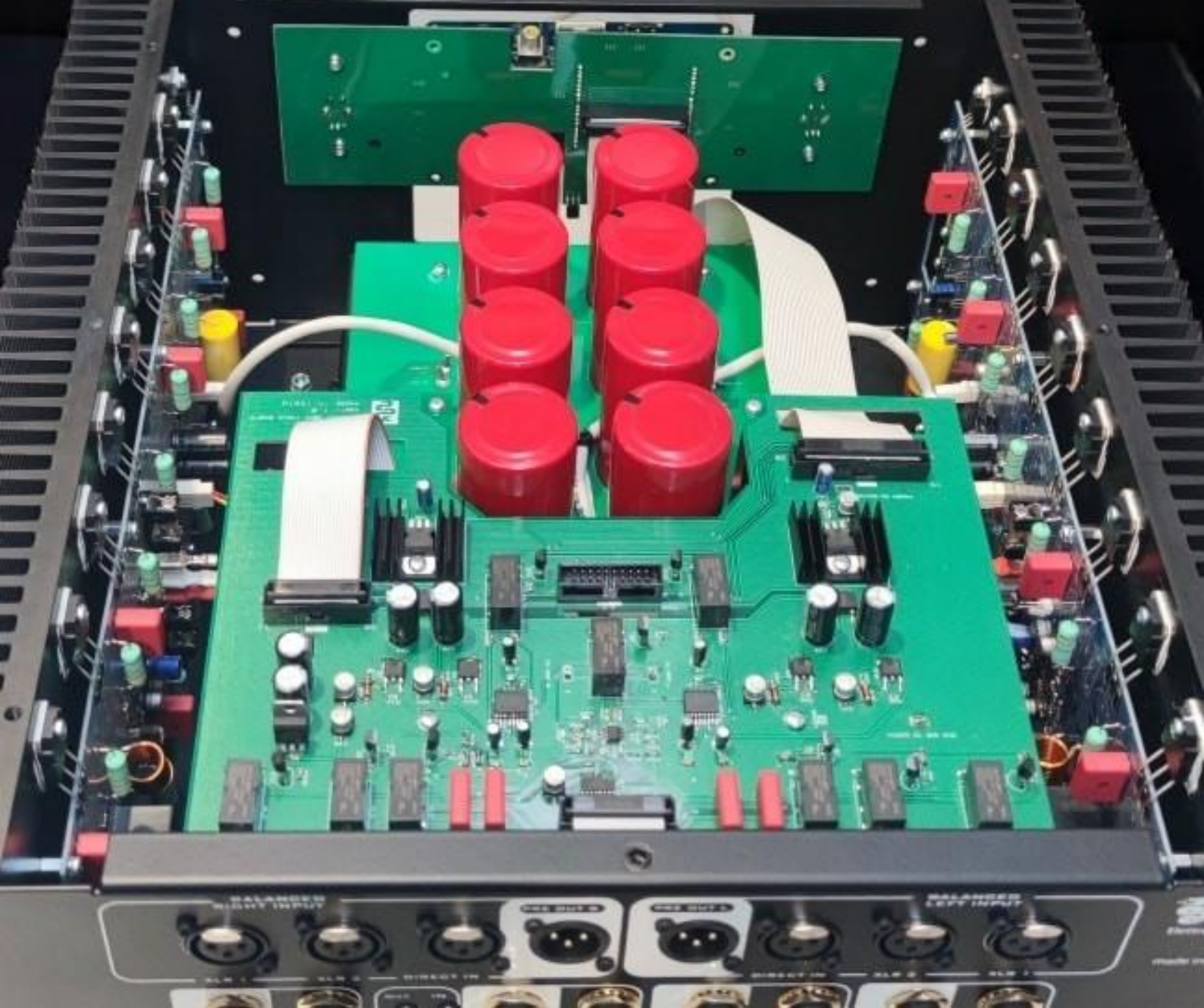
Our integrated amplifier CLASSIC 302i has been designed, engineered, and developed to elevate the audio experience. Based on our previous ELEMENT series models, it incorporates the latest innovations in connectivity and digital streaming, delivering an even clearer, more detailed, and immersive sound.

We are proud to declare that this new generation of low-noise, high-harmonic contrast circuits marks the start of a true sonic revolution. Thanks to cutting-edge circuit design, a modern volume control system, next-generation components, and advanced features, CLASSIC 302i ensures precise, distortion-free, and dynamic sound.

One of its main features is the ability to amplify the audio signal without alterations, maintaining a high dynamic range and reproducing music with absolute fidelity. Its powerful power supply eliminates background noise and distortion, delivering pure and engaging listening.

The CLASSIC 302i is extremely versatile: it offers numerous audio inputs and outputs, including an excellent MM phono input, two balanced inputs, and three line inputs, making it compatible with a wide range of sources, from CD players to turntables. Moreover, the integrated Hyperstream DAC, based on SABRE ESS 9038 q2m technology, further expands the digital connection possibilities, offering unparalleled playback quality.

Designed for ease of use and setup, its intuitive interface allows you to configure it in minutes, so you can immediately immerse yourself in an extraordinary sound world.



Balanced Circuitry and Dual Mono

In the new 302I, we have significantly increased the power supply stage and developed the entire project with a dual mono architecture. Each channel has separate, optimally filtered, and stabilized power supplies, as well as independent ground planes. This configuration ensures extremely effective channel separation, translating into a very natural sound with incredible and realistic focus and soundstage reconstruction.

The wiring has been minimized; the conversion of line inputs to balanced and the ability to integrate the system with audio/video setups ensures absolute and long-lasting performance. The design is completed by a high-performance PHONO RIAA section, ideal for vinyl enthusiasts, and the option to use PRE-OUT / AMP-IN outputs, conveniently selectable via remote control, for unprecedented versatility.

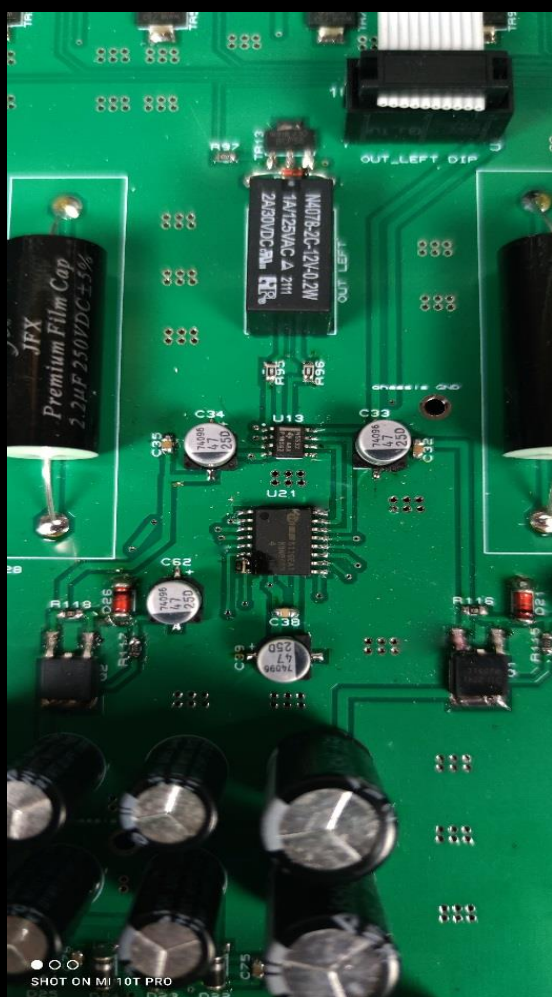
Balanced Circuitry Philosophy

We understand there are many differing opinions about this configuration. Some say it is unnecessary in home settings, others that it might degrade or dirty the sound, and still others that see it only as a way to increase the cost of devices for commercial reasons.

However, these claims might only be true if this part of the project is neglected or designed superficially. Recent field tests have shown that if the overall design is carried out with care and attention, the final result can be truly exceptional in terms of musicality, transparency, and dynamics.

In the CLASSIC 302I, nothing was left to chance: from the dual mono power supply and circuitry to the very heart, where each amplification section is doubled. Even the volume control is innovative, using two separate stages per channel, digitally controlled via a mosfet array. Additionally, thanks to its native balanced nature, even single-ended line inputs are fully converted to balanced, including the PHONO RIAA stage. Simply put, you won't hear a more dynamic and transparent preamplifier than this.

Volume control section



DAC section

The 302I is equipped with a state-of-the-art DAC stage that further expands the inputs for new digital technologies. Three additional inputs—USB, COAX, and OPTICAL—make the amplifier extremely versatile with a wide range of connection options to best enjoy music from your preferred source, whether streaming, a CD player, or a television.

The DAC reads files with conversion up to 768 kHz in PCM and DSD 512 in DSD or DSD 1024 natively. The DAC board is also replaceable and upgradable at any time to always have the latest digital audio innovations at your fingertips.

Practical and Functional Connections





Practical and Functional Connections

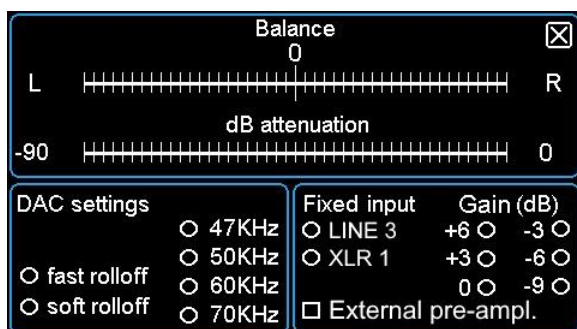
The multiple connections make it versatile in any system, as a pure integrated amplifier or also as a preamplifier/power amplifier, integrating into already existing complex systems. To leave nothing to chance, the dedicated PRE-OUT and AMP-IN outputs can also be managed in balanced connection and are enabled from the practical touchscreen display or remote control. All functions are visible on the main screen—simple, intuitive, practical!

From the SETTINGS menu, you access the second page where you can set all secondary functions, such as: DAC settings, input gain, fixed volume inputs for audio/video system integration, EXTERNAL use as pure final



All functions are visible on the main screen.

simple, intuitive, practical!



From the SETTINGS menu you access the second page where you can set all the secondary functions, such as:

- DAC setting
- Input gain
- Fixed volume inputs for integration into audio/video systems
- EXTERNAL for use as a pure power amplifier or preamplifier

datasheet

integrated amplifier dual mono

- RMS power for channel , both chanel driven @1Khz
300 W @ 8 ohm
600 W @ 4 ohm
1000 W @ 2 ohm
- EIA power for channel , both chanel driven / 20hz- 20Khz.
450 W @ 8 ohm
720W @ 4 ohm
- THD + N – weight A - 0.003% @ nominal power 8 ohm
- Input
2 balnced input via XLR
3 line input
1 phono input RIAA MM
1 ingresso AMP-IN selezionabile
- output
1 pair of XLR PRE-OUT
1 pair of Binding post 6mm
- input impedance :
47 Kohm via XLR , 22 Kohm via RCA
- Slew/rate
35 V/uS
- Frequency response
Da 20 hz a 90 Khz +/- 0.2 db
- Phono input
MM – 47Khom – 41 db gain
- DAC section
USB – 784 Khz pcm – DSD256 in Dop mode / DSD 512 nativo
COAX
Optical
- Chanel separation > 83 db
- SNR weight A >108 db
- Dimension 46 —x 42 x 21 cm. (P x L x H)
- weight 42 kg

remote control included

www.eamlab.com

Made in Italy